

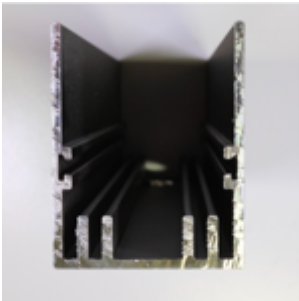
# INTEGRATE

screen solutions

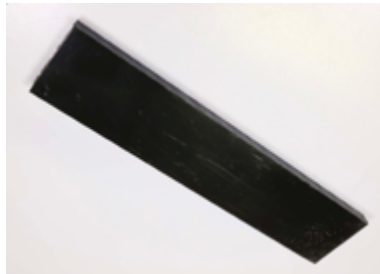
VISIT [WWW.INTEGRATESCREENSOLUTIONS.COM](http://WWW.INTEGRATESCREENSOLUTIONS.COM) TO ACCESS INSTALLTION VIDEOS

## Screen System Components

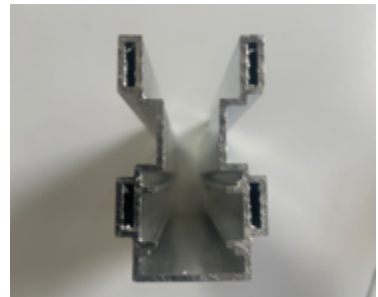
Top track



Bottom Track Insert



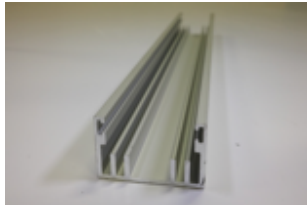
Finger pull



Fixed Jamb



Bottom Track



Insert Joiner



Track String Guide



Cassette String Guide



Spring Attachment Assembly



Hardware Packet



# INTEGRATE

screen solutions

VISIT [WWW.INTEGRATESCREENSOLUTIONS.COM](http://WWW.INTEGRATESCREENSOLUTIONS.COM) TO ACCESS INSTALLTION VIDEOS

## Tools Needed

2 Installers



Laser Level



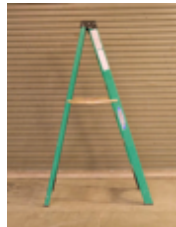
*Screw Gun (Philips Tip)*



Utility Knife.



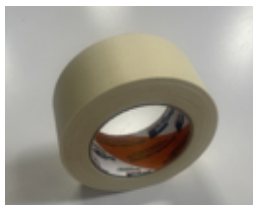
Ladder



Saw Horses



Masking tape



Shims (flat only)



# INTEGRATE

screen solutions

VISIT [WWW.INTEGRATESCREENSOLUTIONS.COM](http://WWW.INTEGRATESCREENSOLUTIONS.COM) TO ACCESS INSTALLTION VIDEOS

It is best practice to place the cassette box(es) and track tube(s) on saw horses to open them up, inspect them, and proceed with the installation.



Identify the top and bottom tracks. Remove the roller track insert from the bottom track.



# INTEGRATE

screen solutions

VISIT [WWW.INTEGRATESCREENSOLUTIONS.COM](http://WWW.INTEGRATESCREENSOLUTIONS.COM) TO ACCESS INSTALLTION VIDEOS

Center the Bottom Track in the opening, If you are installing the screen up against a door system, level the screen bottom track to match the already leveled door sill. You may choose to shim the screen bottom track up to be flush with the threshold of the door system. Properly shim, level, and fasten the bottom track of the screen using the provided attachment holes, always place shims at or near attachment points. use of a laser level is strongly recommended for this step.



# INTEGRATE

screen solutions

VISIT [WWW.INTEGRATESCREENSOLUTIONS.COM](http://WWW.INTEGRATESCREENSOLUTIONS.COM) TO ACCESS INSTALLTION VIDEOS

Properly shim, plum, and fasten jamb "A" on either side of the rough opening, The top of either jamb will have the deeper milling detail, the bottom of either jamb will have the shallow milling



(Two installers required for this step) Installer one grabs jamb "B" from the saw horses, installer two grabs the top track from the saw horses. Installer one places the bottom of jamb "B" in to the bottom track ( the end of the jamb with the shallow milling), leaving the jamb leaned in to the opening with plenty of clearance to insert the top track. Installer two carefully slides the top track on to already installed jamb "A", holding the top track against the top of the rough opening. Installer one slowly slides jamb "B" in to the top track making sure jamb "B" is centered within the top track..

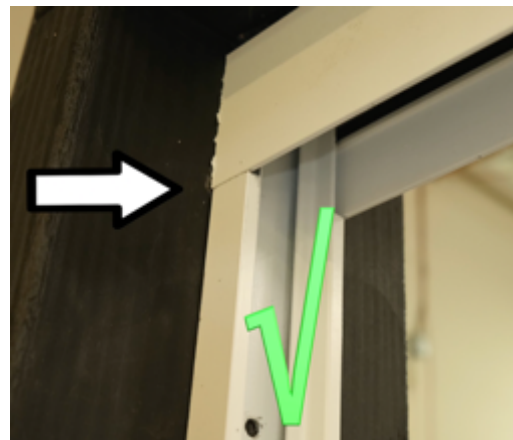
# INTEGRATE

screen solutions

VISIT [WWW.INTEGRATESCREENSOLUTIONS.COM](http://WWW.INTEGRATESCREENSOLUTIONS.COM) TO ACCESS INSTALLTION VIDEOS



Now, Properly shim, level, plum, and fasten both the top track and jamb “B” using the provided attachment holes, remember to always place shims at attachment points. Once the entire screen frame is secured in the opening, It is important to take several measurements along the opening between the top and bottom track to make certain they are dimensionally consistent. If the tracks are separated or pinched, the operation of the screen system will be impacted.





# INTEGRATE

screen solutions

VISIT [WWW.INTEGRATESCREENSOLUTIONS.COM](http://WWW.INTEGRATESCREENSOLUTIONS.COM) TO ACCESS INSTALLTION VIDEOS

While still on the saw horses, slowly unwind the cassette strings from both ends of the cassette. Be careful to keep the strings clear of dirt and debris, and try not to step on them!



View both sides of the screen cassette to determine which direction your cassette will operate, the cassette is directionally universal, however The strings will be coming out of the cassette on the operational side, the side that slides back and forth in the opening. One end of the cassette will have a moulding with wheels, this is the bottom of the operational side of the cassette.



# INTEGRATE

## screen solutions

VISIT [WWW.INTEGRATESCREENSOLUTIONS.COM](http://WWW.INTEGRATESCREENSOLUTIONS.COM) TO ACCESS INSTALLTION VIDEOS

Place the bottom of the screen cassette in to the bottom track first, at an angle towards the center of the opening, with the bottom wheel guide and the strings facing the center of the opening, in the direction in which you want the screen to operate. then slowly position the cassette in to the top track, and click it in to what is now your retracted jamb. Where the screen cassette will collect.



Use masking tape to temporarily secure the cassette to the retracted jamb so it does not fall out during the remainder of the installation.





# INTEGRATE

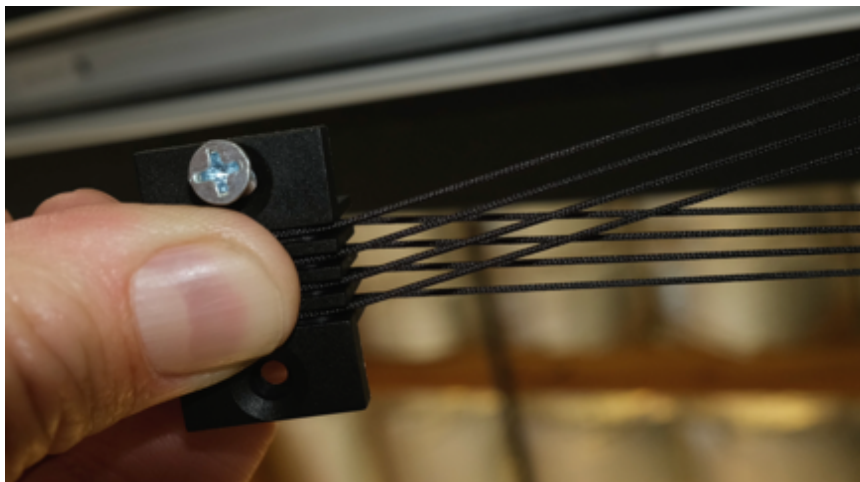
screen solutions

VISIT [WWW.INTEGRATESCREENSOLUTIONS.COM](http://WWW.INTEGRATESCREENSOLUTIONS.COM) TO ACCESS INSTALLTION VIDEOS

Remove the small bag of accessory parts from the cassette box and open it, locate the frame string guides.



Take one frame string guide to the retracted side of the opening where the strings come out of the cassette, place it near the top of the cassette, and carefully place the strings in their dedicated slot in the guide. This step is important, the strings need to be properly aligned. Slowly slide the track string guide, keeping the strings in order, back to the extended jamb side of the opening.

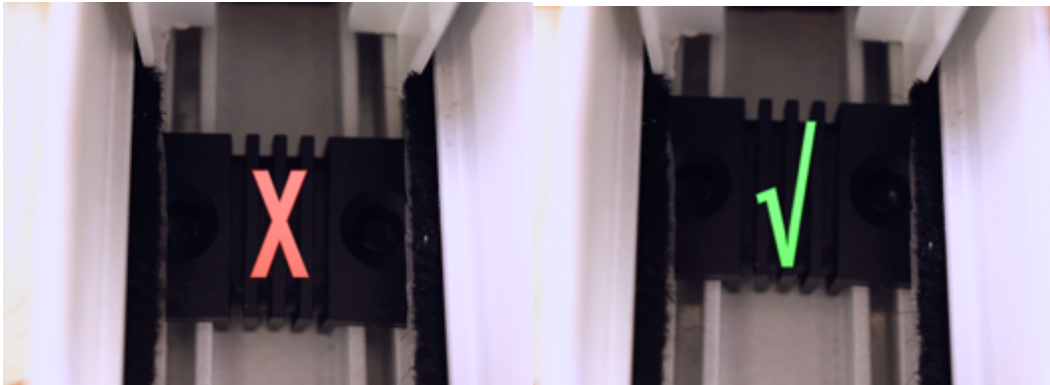


# INTEGRATE

## screen solutions

VISIT [WWW.INTEGRATESCREENSOLUTIONS.COM](http://WWW.INTEGRATESCREENSOLUTIONS.COM) TO ACCESS INSTALLTION VIDEOS

With the strings correctly looped around the guide, and untangled, place the guide back in the top track, slide the string guide to the end of the track until it stops against the jamb and attach the string guide.



Untie the knot at the end of the strings and carefully pull on each string individually, making certain the strings are free, and there is no slack in the cassette.



# INTEGRATE

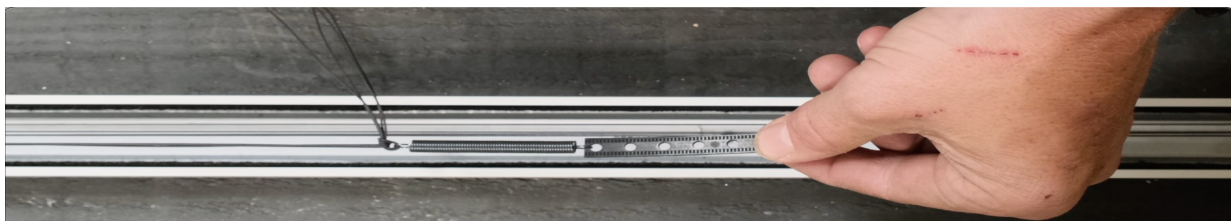
screen solutions

VISIT [WWW.INTEGRATESCREENSOLUTIONS.COM](http://WWW.INTEGRATESCREENSOLUTIONS.COM) TO ACCESS INSTALLTION VIDEOS

Now loop the strings through the available end of the spring on the spring attachment assembly.



Holding the assembly in position near the spring anchor hole (marked with a label) in the track, tie the strings to the spring using a secure knot, (a double knot is recommended) now carefully loop the spring attachment assembly underneath the operational strings and attach to the spring anchor hole.



**Pro Tip: when attaching the spring to the anchor hole  
extend the spring +1/2 it's original length  
evenly on the top and bottom  
to keep the strings taugt and operation smooth**

# INTEGRATE

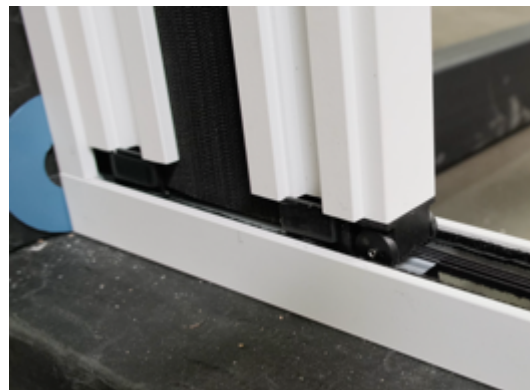
## screen solutions

VISIT [WWW.INTEGRATESCREENSOLUTIONS.COM](http://WWW.INTEGRATESCREENSOLUTIONS.COM) TO ACCESS INSTALLTION VIDEOS

Repeat this process for the bottom of the cassette. When top and bottom are complete, inspect the strings along the top and bottom tracks and make certain they not tangled or sagging, then cut the excess string with about ½" remaining past the string knot.



Reinstall the roller track insert in to the bottom track, it will be necessary to lift the operational strings to slide the track underneath them. It will also be necessary to lift the cassette so the roller track can slide completely under the cassette.



# INTEGRATE

## screen solutions

VISIT [WWW.INTEGRATESCREENSOLUTIONS.COM](http://WWW.INTEGRATESCREENSOLUTIONS.COM) TO ACCESS INSTALLTION VIDEOS

Remove the tape from the cassette, have one person hold the cassette in place at the retracted jamb, operate the cassette across the opening. If the screen operates freely, attach the cassette through the retracted jamb using the provided attachment hole near the center of the cassette. You will need to open the cassette and clear the mesh to expose the attachment point.



You may need to massage the mesh so all the pleats release while in the extended position.



# INTEGRATE

screen solutions

VISIT [WWW.INTEGRATESCREENSOLUTIONS.COM](http://WWW.INTEGRATESCREENSOLUTIONS.COM) TO ACCESS INSTALLTION VIDEOS



After the cassette is installed, anchored to the jamb, and operating smoothly, the final step is to slide the bottom track insert tight to the bottom string guide, and attach with the provided screws.

Congratulations on completing the installation of your Integrate Screen System! For trouble shooting or questions, please feel free to contact us at [support@integratescreens.com](mailto:support@integratescreens.com)